

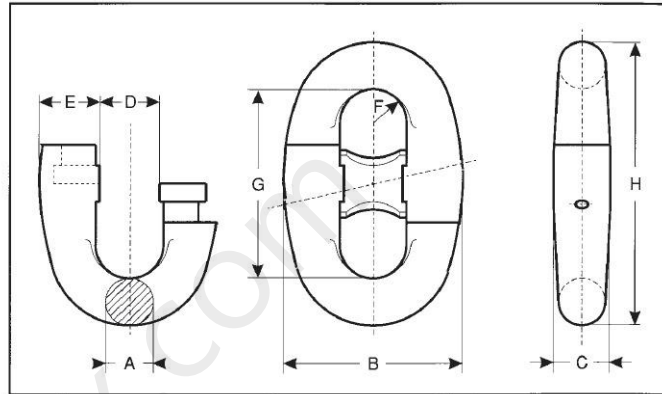
MAILLE DÉMONTABLE (TYPE KENTER) KENTER CONNECTING LINK

La maille démontable type KENTER est utilisée pour jonctionner deux éléments de chaîne à étais terminés par des mailles MO ou GM.

Matière : Acier forgé à haute résistance
Qualité : U2 – U3.
 Charges de tension et de rupture suivant DT 100.

The KENTER joining shackle is used to join two stud link chain elements ending in common link or enlarged link.

*Material : Heavy duty forged steel.
 Grade : U2 – U3.
 Proof and breaking loads as for DT 100.*



| CODE MD | DN mm | NS Inches | A mm | B mm | C mm | D mm | E mm | F mm | G mm | H mm | kg |
|---------|-------|-----------|------|------|------|------|------|------|------|------|------|
| 030 014 | 14 | 9/16 | 14 | 59 | 21 | 16 | 22 | 9 | 56 | 84 | 0.5 |
| 030 016 | 16 | 5/8 | 16 | 67 | 24 | 18 | 25 | 11 | 64 | 96 | 0.6 |
| 030 017 | 17.5 | 11/16 | 18 | 73 | 27 | 20 | 27 | 12 | 70 | 105 | 0.8 |
| 030 019 | 19 | 3/4 | 19 | 79 | 29 | 21 | 29 | 13 | 76 | 114 | 1 |
| 030 020 | 20.5 | 13/16 | 21 | 86 | 31 | 23 | 32 | 14 | 82 | 123 | 1.6 |
| 030 022 | 22 | 7/8 | 22 | 92 | 33 | 24 | 34 | 15 | 88 | 132 | 1.6 |
| 030 024 | 24 | 15/16 | 24 | 100 | 36 | 27 | 37 | 16 | 96 | 144 | 2 |
| 030 026 | 26 | 1 | 26 | 109 | 40 | 29 | 40 | 17 | 104 | 156 | 2.7 |
| 030 028 | 28 | 1 1/8 | 28 | 117 | 43 | 31 | 43 | 18 | 112 | 168 | 3.3 |
| 030 030 | 30 | 1 3/16 | 30 | 125 | 46 | 33 | 47 | 20 | 120 | 180 | 3.9 |
| 030 032 | 32 | 1 1/4 | 32 | 134 | 49 | 36 | 50 | 21 | 128 | 192 | 4.6 |
| 030 034 | 34 | 1 3/8 | 34 | 142 | 52 | 38 | 53 | 22 | 136 | 204 | 5.8 |
| 030 036 | 36 | 1 7/16 | 36 | 150 | 55 | 40 | 56 | 24 | 144 | 216 | 6.6 |
| 030 038 | 38 | 1 1/2 | 38 | 159 | 58 | 42 | 59 | 25 | 152 | 228 | 7.8 |
| 030 040 | 40 | 1 9/16 | 40 | 167 | 61 | 45 | 62 | 26 | 160 | 240 | 9.8 |
| 030 042 | 42 | 1 5/8 | 42 | 176 | 64 | 47 | 65 | 28 | 168 | 252 | 10.6 |
| 030 044 | 44 | 1 3/4 | 44 | 184 | 67 | 49 | 68 | 29 | 176 | 264 | 12 |
| 030 046 | 46 | 1 13/16 | 46 | 192 | 70 | 51 | 71 | 30 | 184 | 276 | 14 |
| 030 048 | 48 | 1 7/8 | 48 | 201 | 73 | 53 | 74 | 32 | 192 | 288 | 15.5 |
| 030 050 | 50 | 2 | 50 | 209 | 76 | 56 | 78 | 33 | 200 | 300 | 17.5 |
| 030 052 | 52 | 2 1/16 | 52 | 217 | 79 | 58 | 81 | 34 | 208 | 312 | 20 |
| 030 054 | 54 | 2 1/8 | 54 | 226 | 82 | 60 | 84 | 36 | 216 | 324 | 22 |
| 030 056 | 56 | 2 3/16 | 56 | 234 | 85 | 62 | 87 | 37 | 224 | 336 | 26 |
| 030 058 | 58 | 2 1/4 | 58 | 242 | 88 | 65 | 90 | 38 | 232 | 348 | 30 |
| 030 060 | 60 | 2 3/8 | 60 | 251 | 91 | 67 | 93 | 40 | 240 | 360 | 31.5 |
| 030 062 | 62 | 2 7/16 | 62 | 259 | 94 | 70 | 96 | 41 | 248 | 372 | 34 |
| 030 064 | 64 | 2 1/2 | 64 | 268 | 97 | 72 | 99 | 42 | 256 | 384 | 38 |
| 030 066 | 66 | 2 9/16 | 66 | 276 | 100 | 74 | 102 | 44 | 264 | 396 | 44 |
| 030 068 | 68 | 2 11/16 | 68 | 284 | 103 | 76 | 105 | 45 | 272 | 408 | 47 |
| 030 070 | 70 | 2 3/4 | 70 | 293 | 106 | 78 | 109 | 46 | 280 | 420 | 52 |
| 030 073 | 73 | 2 7/8 | 73 | 305 | 111 | 81 | 113 | 48 | 292 | 438 | 57.5 |
| 030 076 | 76 | 3 | 76 | 318 | 116 | 85 | 118 | 50 | 304 | 456 | 65 |
| 030 078 | 78 | 3 1/16 | 78 | 326 | 119 | 87 | 121 | 51 | 312 | 468 | 70 |
| 030 081 | 81 | 3 3/16 | 82 | 343 | 125 | 90 | 127 | 54 | 328 | 492 | 82 |
| 030 084 | 84 | 3 5/16 | 84 | 351 | 128 | 94 | 130 | 55 | 336 | 504 | 88 |
| 030 087 | 87 | 3 7/16 | 87 | 364 | 132 | 97 | 135 | 57 | 348 | 522 | 95 |
| 030 090 | 90 | 3 1/2 | | | 137 | 101 | 140 | 59 | 360 | 540 | 104 |
| 030 092 | 92 | 3 5/8 | 92 | | | 103 | 143 | 61 | 368 | 552 | 112 |
| 030 095 | 95 | 3 3/4 | 95 | | | 106 | 147 | 63 | 380 | 570 | 123 |
| 030 097 | 97 | 3 13/16 | 97 | 405 | 147 | 108 | 150 | 64 | 388 | 582 | 131 |
| 030 100 | 100 | 3 15/16 | 100 | 418 | 152 | 112 | 155 | 66 | 400 | 600 | 144 |
| 030 102 | 102 | 4 | 102 | 426 | 155 | 114 | 158 | 67 | 408 | 612 | 151 |

For Information Purposes Only